

VACUUM PUMP FOR LIQUID AND PASTA



- Constructed of FDA Accepted Materials
- Electro-Polished 316 Stainless Steel Fluid Section
- Bolted Construction with all Stainless Steel Hardware
- All Investment Cast Wetted Parts

Typical Applications:

- Food Processing
- Cosmetics
- Pharmaceutical
- Chemical Additives
- Adhesives (Food grade)
- Paint
- Applications Requiring Quick Disconnect Fluid Connections

Your Local Distributor :

JOTAM

Telp: 021 4513089

Fax : 021 451 5743

Email: jotam@cbn.net.id

Where's Your EXP Opportunity?

- ▷ Tanker / Truck / Train Unloading
- ▷ Bulk Tank / Tank Farm Transfer
- ▷ Waste Water Treatment / Fluid Filtration
- ▷ Formulation
- ▷ Basic Transfer / Supply
- ▷ Packaging / Filling
- ▷ Batching / Blending
- ▷ System Flush
- ▷ Recirculation / Reclamation

Chemical Processing

Formulation Of:

- Soaps
- Detergents
- Cleansing / Polishing Agents
- Paints / Dyes
- Adhesives
- Inks
- Shear Sensitive Materials

Surface Preparation:

Supply and Transfer of:

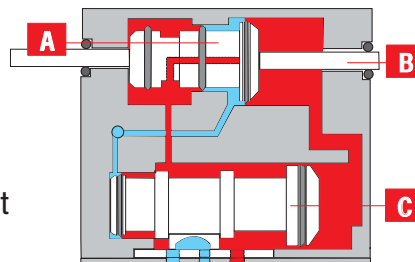
- e-Coat
- Etching
- Plating

Food and Pharmaceuticals

Supply and Transfer of:

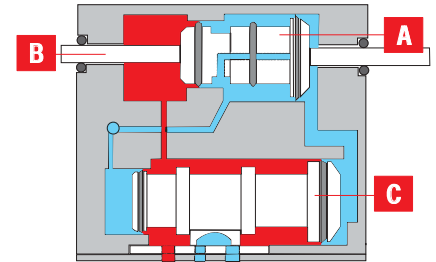
- FDA Materials

Diaphragm Moving Right to Left



- 1.) The diaphragm pushes the right Actuator Pin (B) mechanically moving the Simul-Shift Valve (A) to the left.
- 2.) Compressed air flows to the large side of the Simul-Shift Valve, pneumatically moving the valve to the position shown.
- 3.) Compressed air also flows to the large end of the Major Air Valve (C), pneumatically shifting it to the left.

Diaphragm Moving from Left to Right



At end of stroke:

- 1.) Diaphragm pushes Pin (B) and Simul-Shift Valve (A) to the right.
- 2.) Large ends of Simul-Shift Valve (A) and Major Valve (C) are vented to exhaust pilot signal.
- 3.) Constant compressed air supply acting on the smaller areas of the Simul-Shift Valve and Major Valve shifts both valves to the right and hold them in position until the next cycle begins